

# STANDARD CARPORTS 12'- 24'W

STATES: AR, OK, MO, NE, IL, IN, IA, KS **NON CERTIFIED**



REGULAR STYLE WXL				
12x20	18x20	20x20	22x20	24x20
\$1,500	\$1,835	\$2,050	\$2,420	\$2,610
12x25	18x25	20x25	22x25	24x25
\$1,840	\$2,230	\$2,475	\$2,890	\$3,095
12x30	18x30	20x30	22x30	24x30
\$2,185	\$2,630	\$2,910	\$3,350	\$3,565
12x35	18x35	20x35	22x35	24x35
\$2,525	\$3,035	\$3,320	\$3,830	\$4,050
12x40	18x40	20x40	22x40	24x40
\$2,865	\$3,450	\$3,770	\$4,355	\$4,580

NOTE: BASE RAIL FRAME LENGTH'S ARE 20',25',30' ETC.

**REGULAR STYLE HAS 6" ROOF OVERHANG ON FRONT AND BACK.**

BOXED EAVE STYLE WXL				
12x20	18x20	20x20	22x20	24x20
\$1,700	\$2,050	\$2,275	\$2,650	\$2,845
12x25	18x25	20x25	22x25	24x25
\$2,050	\$2,450	\$2,700	\$3,125	\$3,320
12x30	18x30	20x30	22x30	24x30
\$2,420	\$2,865	\$3,145	\$3,595	\$3,800
12x35	18x35	20x35	22x35	24x35
\$2,780	\$3,280	\$3,570	\$4,100	\$4,300
12x40	18x40	20x40	22x40	24x40
\$3,150	\$3,690	\$4,030	\$4,635	\$4,840

NOTE: BASE RAIL FRAME LENGTH'S ARE 20',25',30' ETC.

**BOXED EAVE HAS 6" ROOF OVERHANG ON FRONT, BACK AND SIDE EAVES.**

VERTICAL ROOF STYLE WXL				
12x20	18x20	20x20	22x20	24x20
\$2,300	\$2,780	\$2,960	\$3,325	\$3,525
12x25	18x25	20x25	22x25	24x25
\$2,760	\$3,315	\$3,540	\$3,950	\$4,180
12x30	18x30	20x30	22x30	24x30
\$3,175	\$3,795	\$4,010	\$4,460	\$4,715
12x35	18x35	20x35	22x35	24x35
\$3,650	\$4,375	\$4,615	\$5,115	\$5,400
12x40	18x40	20x40	22x40	24x40
\$4,125	\$4,950	\$5,235	\$5,810	\$6,125

NOTE: BASE RAIL FRAME LENGTH'S ARE 20',25',30' ETC.

**VERTICAL ROOF HAS NO OVERHANG ON FRONT OR BACK JUST ON SIDE EAVES.**

## STANDARD FEATURES:

14 Gauge frame, 6ft Std legs, 29 Gauge roofing, maximum rafter/ column spacing 5' on center or less, braces on all center rafters and on top corner posts, 4 ft welded trusses on 22'-24' wide carports. Single leg system for buildings 6'-12' tall, double leg system for building 13'-16' ft tall legs. **Customer must supply lull lift for buildings 13'-16' tall leg height.**



- Free Installation On Your Level Lot
- Engineer Plans Available Call 877-494-2997
- Financing Available / Rent To Own Available
- Rebar Anchors Included /Concrete Anchors Included

**\*30 Day Workmanship warranty** on all Buildings, effective day of Installation.

**\*20 Year limited warranty** on 12 Gauge framing materials assuming regular care and maintenance given to building.

We strongly recommend you to purchase vertical roofs on buildings 31ft or longer to prevent leaks.

**2024 V3**

"ALL PRICES SUBJECT TO CHANGE WITHOUT NOTICE"

©2024 Copyright All Rights Reserved Tri State Carports, Inc

# STANDARD CARPORTS 12'-24' WIDE OPTIONS

LEG HEIGHT CHART						CLOSE BOTH SIDES CHART					CLOSE ONE END CHART				
	20'L	25'L	30'L	35'L	40'L	20'L	25'L	30'L	35'L	40'L	12'W	18'W	20'W	22'W	24'W
<b>6FT</b>	std	std	std	std	std	\$550	\$690	\$840	\$1,000	\$1,170	\$550	\$716	\$780	\$875	\$1,043
<b>7FT</b>	\$85	\$145	\$230	\$315	\$400	\$680	\$830	\$990	\$1,160	\$1,340	\$650	\$816	\$880	\$975	\$1,143
<b>8FT</b>	\$170	\$260	\$352	\$443	\$535	\$810	\$970	\$1,140	\$1,320	\$1,510	\$750	\$916	\$980	\$1,075	\$1,243
<b>9FT</b>	\$280	\$375	\$475	\$572	\$670	\$940	\$1,110	\$1,290	\$1,480	\$1,680	\$850	\$1,015	\$1,080	\$1,175	\$1,343
<b>10FT</b>	\$390	\$490	\$598	\$700	\$804	\$1,070	\$1,250	\$1,440	\$1,640	\$1,850	\$950	\$1,116	\$1,180	\$1,275	\$1,443
<b>11FT</b>	\$500	\$610	\$720	\$828	\$940	\$1,200	\$1,390	\$1,590	\$1,800	\$2,020	\$1,050	\$1,216	\$1,280	\$1,375	\$1,543
<b>12FT</b>	\$610	\$725	\$844	\$956	\$1,075	\$1,330	\$1,530	\$1,740	\$1,960	\$2,190	\$1,150	\$1,316	\$1,380	\$1,475	\$1,643
<b>13FT*</b>	\$1,255	\$1,495	\$1,718	\$1,955	\$2,180	\$1,460	\$1,670	\$1,890	\$2,120	\$2,360	\$1,300	\$1,466	\$1,530	\$1,625	\$1,793
<b>14FT*</b>	\$1,395	\$1,650	\$1,885	\$2,135	\$2,340	\$1,590	\$1,810	\$2,040	\$2,280	\$2,530	\$1,400	\$1,566	\$1,630	\$1,725	\$1,893
<b>15FT*</b>	\$1,535	\$1,805	\$2,051	\$2,314	\$2,540	\$1,720	\$1,950	\$2,190	\$2,440	\$2,700	\$1,500	\$1,666	\$1,760	\$1,825	\$1,993
<b>16FT*</b>	\$1,675	\$1,958	\$2,217	\$2,495	\$2,735	\$1,850	\$2,090	\$2,340	\$2,600	\$2,870	\$1,600	\$1,766	\$1,830	\$1,925	\$2,093
<b>*DOUBLE LEG AND BASE RAIL SYSTEM HEIGHTS 13FT-16FT</b>						ADD 60% FOR VERTICAL SIDES					ADD 40% FOR VERTICAL ENDS				
<b>ROOF REFLECTIVE INSULATION ADD ON:</b> Add 2' to width and multiply by length. EX. 12' wide x 21' long (14x21= 294 sf x rate = \$ 735.00) R Value 14.7 <u>\$2.50 SF</u> 95% Reflectivity Helps reduce building condensation						<b>REFLECTIVE INSULATION (BOTH SIDES) ADD ON:</b> Multiply leg height by length by 2. EX. 21' long x 6' tall 6x21= 126 sf x 2 =252 sf x 2.50 = \$630.00 both sides					<b>REFLECTIVE INSULATION (PER END) ADD ON:</b> Add 3' to leg height multiply by width EX. 12' wide x 6' tall 9x12= 108 sf x 2.50 = \$270.00 per end				

Add \$100.00 Trip Fee on any purchase less than \$500.00

Connection fees valid only if you are purchasing 2 buildings at the same time (not on existing buildings)

Connecting end to end. \$100.00  
Connecting side to side. \$150.00


	20'L	25'L	30'L	35'L	40'L
12 GAUGE FRAME UPGRADE	12'W-18'W \$600	25'L \$650	30'L \$700	35'L \$750	40'L \$800
	20'W-24'W \$775	\$880	\$980	\$1,090	\$1,190
3FT BRACES	\$72	\$86	\$101	\$115	\$130
MOBILE HOME ANCHORS	\$120	\$120	\$180	\$180	\$240

Labor Fees	20'L	25'L	30'L	35'L	40'L
Build over fee	\$150	\$175	\$200	\$250	\$300
Cut leg fee	\$175	\$200	\$250	\$300	\$350

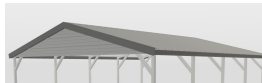
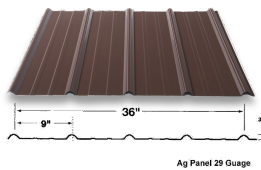


FRAME OUTS	WINDOW \$80.00 EACH	WALK DOOR \$90.00 EACH
------------	---------------------	------------------------

DOOR FRAME OUTS	6'W-12'W ON END <u>\$150.00 EACH</u> 13'W-16'W ON END <u>\$300.00 EACH</u>
	6'W-12'W ON SIDE <u>\$200.00 EACH</u> 13'W-16'W ON SIDE <u>\$400.00 EACH</u>
	<b><u>16FT WIDE MAX ON END AND SIDE DOOR OPENINGS</u></b>
	ON ENDS: MUST CLOSE FIRST FOR FRAME OUTS, IF NO PANELS WANTED ON END (FRAME END ONLY) <u>DISCOUNT 20% FROM CLOSED END PRICE.</u>

WELDED TRUSSES	EXTRA BRACES
4' LONG \$32.00 EA.	2' LONG \$14.00 EA.
5' LONG \$50.00 EA.	3' LONG \$22.00 EA.
8' LONG \$94.00 EA.	

**CONCRETE DIMENSIONS**  
In reference to frame size  
**Ex. 12'Wx20'L building frame size. Make pad 12'8"Wx20'8"L.**  
Make the extra 4" all around slope away from the building edge to run off water.



ITEM	SIZE	PRICE PER EACH
EXTRA FRAME BOW	12'-20' WIDE	\$252.00
EXTRA FRAME BOW	21'-24' WIDE	\$312.00
ADD \$10.00 FOR EACH ADDITIONAL HEIGHT		
MOBILE HOME ANCHOR	3/4"WX30"H	\$30.00
ASPHALT ANCHOR	3/4"WX30"H	\$30.00
WINDOW	24"WX36"H	\$190.00
MAN DOOR (LEFT OUTSWING)	36"WX80"H	\$515.00
ADD \$50.00 FOR SIDE DOOR INSTALL IF HEADER BAR IS NEEDED ADD \$100.00 BUILDING MUST BE A MIN OF 7FT TALL TO INSTALL DOOR ON THE SIDE.		
ROLL UP DOOR	6'WX6'H	\$704.00
ROLL UP DOOR	8'WX7'H	\$848.00
ROLL UP DOOR	9'WX7'H	\$920.00
ROLL UP DOOR	10'WX8'H	\$992.00
ROLL UP DOOR	10'WX10'H	\$1,064.00
ROLL UP DOOR	12'WX12'H	\$2,304.00
ADD \$100.00 SIDE DOOR FEE (PER EACH DOOR) BUILDING MUST BE 1' TALLER TO INSTALL DOOR ON SIDE. ELECTRIC DOOR OPENER \$950.00 EACH		
EXTRA PANELS 36" WIDE	21'L	\$130.00 EA.
EXTRA PANELS 36" WIDE	26'L	\$158.00 EA.
EXTRA PANELS 36" WIDE	31'L	\$187.00 EA.
EXTRA PANELS 36" WIDE	*36'L	\$213.00 EA.
EXTRA PANELS 36" WIDE	*41'L	\$259.00 EA.
*NOT A CONTINUOUS PANEL		
GABLE END	12'-20' WIDE	\$288.00 EA.
GABLE END	21'-24' WIDE	\$396.00 EA.
EXTENDED GABLE END	12'-20' WIDE	\$504.00 EA.
EXTENDED GABLE END	22'-24' WIDE	\$540.00 EA.
EXTENDED GABLE IS GABLE PLUS 3FT MORE ENCLOSED. ADD 40% FOR VERTICAL GABLES		
EXTRA L TRIM	10'6"	\$1.25 PER FT
EXTRA J TRIM	10'6"	\$1.12 PER FT
45° TRIM KIT		\$99.00 EA.
MUST CLOSE END OR SIDE FIRST FOR TRIM KIT.		
EXTRA SUPPORT (REMMENDED FOR 8'-16'H BUILDINGS) \$100.00 EA		

# STANDARD CARPORTS 12'- 24'

STATES: CO, MI, SD, WI, WY

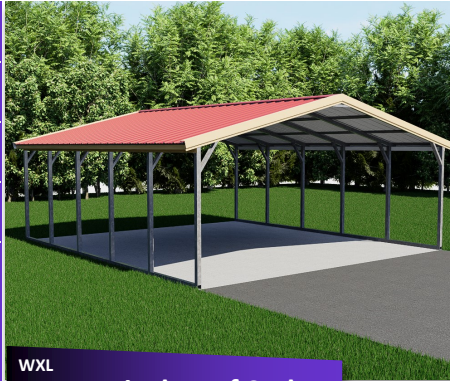
NON CERTIFIED



12x20	18x20	20x20	22x20	24x20
\$2,600	\$3,080	\$3,260	\$3,625	\$3,825
12x25	18x25	20x25	22x25	24x25
\$3,160	\$3,715	\$3,940	\$4,350	\$4,580
12x30	18x30	20x30	22x30	24x30
\$3,675	\$4,295	\$4,510	\$4,960	\$5,215
12x35	18x35	20x35	22x35	24x35
\$4,250	\$4,975	\$5,215	\$5,715	\$6,000
12x40	18x40	20x40	22x40	24x40
\$4,850	\$5,675	\$5,960	\$6,535	\$6,850

NOTE: BASE RAIL FRAME LENGTH'S ARE 20', 25', 30' ETC.

**VERTICAL ROOF HAS NO OVERHANG ON FRONT OR BACK JUST ON SIDE EAVES.**



WXL **Vertical Roof Style**

12x20	18x20	20x20	22x20	24x20
\$2,000	\$2,350	\$2,575	\$2,950	\$3,145
12x25	18x25	20x25	22x25	24x25
\$2,450	\$2,850	\$3,100	\$3,525	\$3,720
12x30	18x30	20x30	22x30	24x30
\$2,920	\$3,365	\$3,645	\$4,095	\$4,300
12x35	18x35	20x35	22x35	24x35
\$3,380	\$3,880	\$4,170	\$4,700	\$4,900
12x40	18x40	20x40	22x40	24x40
\$3,850	\$4,390	\$4,730	\$5,335	\$5,540

NOTE: BASE RAIL FRAME LENGTH'S ARE 20', 25', 30' ETC.

**BOXED EAVE HAS 6" ROOF OVERHANG ON FRONT, BACK AND SIDE EAVES.**



WXL **Boxed Eave Style**

12x20	18x20	20x20	22x20	24x20
\$1,800	\$2,135	\$2,350	\$2,720	\$2,910
12x25	18x25	20x25	22x25	24x25
\$2,240	\$2,630	\$2,875	\$3,290	\$3,495
12x30	18x30	20x30	22x30	24x30
\$2,685	\$3,130	\$3,410	\$3,850	\$4,065
12x35	18x35	20x35	22x35	24x35
\$3,125	\$3,635	\$3,920	\$4,430	\$4,650
12x40	18x40	20x40	22x40	24x40
\$3,565	\$4,150	\$4,470	\$5,055	\$5,280

NOTE: BASE RAIL FRAME LENGTH'S ARE 20', 25', 30' ETC.

**REGULAR STYLE HAS 6" ROOF OVERHANG ON FRONT AND BACK.**



WXL **Regular Style**

## STANDARD FEATURES:

14 Gauge frame, 6ft Std legs, 29 Gauge roofing, maximum rafter/ column spacing 4' on center or less, braces on all center rafters and on top corner posts, 4 ft welded trusses on 22'-24' wide carports. Single leg system for buildings 6'-12' tall, double leg system for building 13'-16' ft tall legs.



Customer must supply lull lift for buildings 13'-16' tall leg height.

## ROOF REFLECTIVE INSULATION ADD ON:

Add 2' to width and multiply by length. EX. 12' wide x 21' long (14x21= 294 sf x rate = \$ 735.00)  
R Value 14.7

**\$2.50 SF** 95% Reflectivity Helps reduce building condensation

- Free Installation On Your Level Lot
- Engineer Plans Available Call 877-494-2997
- Financing Available / Rent To Own Available
- Rebar Anchors Included /Concrete Anchors Included

## LEG HEIGHT CHART

	20'L	25'L	30'L	35'L	40'L
7FT	\$135	\$230	\$315	\$400	\$485
8FT	\$220	\$345	\$437	\$528	\$620
9FT	\$330	\$460	\$560	\$657	\$755
10FT	\$440	\$575	\$683	\$785	\$889
11FT	\$550	\$695	\$805	\$913	\$1,025
12FT	\$660	\$810	\$929	\$1,041	\$1,160
13FT*	\$1,305	\$1,580	\$1,803	\$2,040	\$2,265
14FT*	\$1,445	\$1,735	\$1,970	\$2,220	\$2,425
15FT*	\$1,585	\$1,890	\$2,136	\$2,399	\$2,625
16FT*	\$1,775	\$2,043	\$2,302	\$2,580	\$2,820

\*DOUBLE LEG AND BASE RAIL SYSTEM HEIGHTS 13FT-16FT

## CLOSE BOTH SIDES CHART

	20'L	25'L	30'L	35'L	40'L
6FT	\$550	\$690	\$840	\$1,000	\$1,170
7FT	\$680	\$830	\$990	\$1,160	\$1,340
8FT	\$810	\$970	\$1,140	\$1,320	\$1,510
9FT	\$940	\$1,110	\$1,290	\$1,480	\$1,680
10FT	\$1,070	\$1,250	\$1,440	\$1,640	\$1,850
11FT	\$1,200	\$1,390	\$1,590	\$1,800	\$2,020
12FT	\$1,330	\$1,530	\$1,740	\$1,960	\$2,190
13FT	\$1,460	\$1,670	\$1,890	\$2,120	\$2,360
14FT	\$1,590	\$1,810	\$2,040	\$2,280	\$2,530
15FT	\$1,720	\$1,950	\$2,190	\$2,440	\$2,700
16FT	\$1,850	\$2,090	\$2,340	\$2,600	\$2,870

ADD 60% FOR VERTICAL SIDES

REFLECTIVE INSULATION (BOTH SIDES) ADD ON:

Multiply leg height by length by 2.

EX. 21' long x 6' tall 6x21= 126 sf x 2 =252 sf x 2.50 = \$630.00 both sides

## CLOSE ONE END CHART

	12'W	18'W	20'W	22'W	24'W
6FT	\$550	\$716	\$780	\$875	\$1,043
7FT	\$650	\$816	\$880	\$975	\$1,143
8FT	\$750	\$916	\$980	\$1,075	\$1,243
9FT	\$850	\$1,015	\$1,080	\$1,175	\$1,343
10FT	\$950	\$1,116	\$1,180	\$1,275	\$1,443
11FT	\$1,050	\$1,216	\$1,280	\$1,375	\$1,543
12FT	\$1,150	\$1,316	\$1,380	\$1,475	\$1,643
13FT	\$1,300	\$1,466	\$1,530	\$1,625	\$1,793
14FT	\$1,400	\$1,566	\$1,630	\$1,725	\$1,893
15FT	\$1,500	\$1,666	\$1,760	\$1,825	\$1,993
16FT	\$1,600	\$1,766	\$1,830	\$1,925	\$2,093

ADD 40% FOR VERTICAL ENDS

REFLECTIVE INSULATION (PER END) ADD ON:

Add 3' to leg height multiply by width

EX. 12' wide x 6' tall 9x12= 108 sf x 2.50 = \$270.00 per end

# STANDARD CARPORTS 12'-24' WIDE OPTIONS CO, MI, SD, WI, WY

		20'L	25'L	30'L	35'L	40'L
12 GAUGE FRAME UPGRADE	12'W-18'W	\$650	\$700	\$750	\$800	\$850
	20'W-24'W	\$825	\$930	\$1,030	\$1,140	\$1,240
3FT BRACES		\$72	\$86	\$101	\$115	\$130
MOBILE HOME ANCHORS		\$120	\$120	\$180	\$180	\$240

3' brace upgrade recommended for buildings 8' and higher. Extra support recommended for buildings 10'-12' Tall Legs to prevent swaying.

**\*30 Day Workmanship warranty** on all Buildings, effective day of Installation.

**\*20 Year limited warranty** on 12 Gauge framing materials assuming regular care and maintenance given to building.

We strongly recommend you to purchase vertical roofs on buildings 31ft or longer to prevent leaks.

Labor Fees	20'L	25'L	30'L	35'L	40'L
Build over fee	\$150	\$175	\$200	\$250	\$300
Cut leg fee	\$175	\$200	\$250	\$300	\$350

Add \$100.00 Trip Fee on any purchase less than \$500.00

Connection fees valid only if you are purchasing 2 buildings at the same time (not on existing buildings)


Connecting end to end. \$100.00  
Connecting side to side. \$150.00

## CONCRETE DIMENSIONS

In reference to frame size

Ex. 12'Wx20'L building frame size. Make pad 12'8"Wx20'8"L.

Make the extra 4" all around slope away from the building edge to run off water.

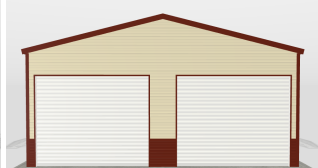
EXTRA FRAME BOW	WELDED TRUSSES	EXTRA BRACES	GARAGE DOORS	*GABLE END
12'-20' WIDE \$252 EA.	4' LONG \$32.00 EA.	2' LONG \$14.00 EA.	6'WX6'H \$704.00 EA.	12'-20' WIDE \$288.00 EA.
22'-24' WIDE \$312 EA.	5' LONG \$50.00 EA.	3' LONG \$22.00 EA.	8'WX7'H \$848.00 EA.	22'-24' WIDE \$396.00 EA.
ADD \$10.00 FOR EACH ADDITIONAL HEIGHT.	8' LONG \$94.00 EA.		9'WX7'H \$920.00 EA.	*CARPORT PEAK ENCLOSED
MOBILE HOME ANCHORS	ASPHALT ANCHORS	WINDOWS white with grids	10'WX8'H \$992.00 EA.	**EXTENDED GABLE
3/4"X30" \$30.00 EA.	3/4"X30" \$30.00 EA.	24"X36" \$190.00 EA.	10'WX10'H \$1,064.00 EA.	12'-20' WIDE \$504.00 EA.
WALK IN DOOR left outswing	EXTRA PANELS 36" wide		12'WX12'H \$2,304.00 EA.	22'-24' WIDE \$540.00 EA.
36"X80" \$515.00 EA.	21' LONG \$130.00 EA.	*36' LONG \$216.00 EA.	ADD \$100.00 SIDE DOOR FEE (PER EACH DOOR) <u>BUILDING MUST BE 1' TALLER TO INSTALL DOOR ON SIDE.</u>	**GABLE PLUS 3' PANEL
ADD \$50.00 SIDE FEE (IF FRAME HEADER BAR IS NEEDED ADD \$100)	26' LONG \$158.00 EA.	*41' LONG \$259.00 EA.		
<u>BUILDING MUST BE A MIN OF 7FT TALL TO INSTALL DOOR ON SIDE.</u>	31' LONG \$187.00 EA.	*NOT A CONTINUOUS PANEL.	ELECTRIC DOOR OPENER \$950.00 EACH	ADD 40% FOR VERTICAL GABLES
EXTRA L TRIM	EXTRA J TRIM	45° TRIM KIT	RECOMMENDED 10-12' TALL ON CONCRETE OR GROUND.	EXTRA SUPPORTS \$100.00 EACH
\$1.25 (PER FT)	\$1.12 (PER FT)	\$99.00 EA. MUST CLOSE END OR SIDE FIRST.		

FRAME OUTS

GABLE END

EXTENDED GABLE END

GARAGE DOORS



FRAME OUTS	WINDOW \$80.00 EACH	WALK DOOR \$90.00 EACH	DOOR FRAME OUTS	6'W-12'W ON END \$150.00 EACH	6'W-12'W ON SIDE \$200.00 EACH	ON ENDS: MUST CLOSE FIRST FOR FRAME OUTS, IF NO PANELS WANTED ON END (FRAME END ONLY) <u>DISCOUNT 20% FROM CLOSED END PRICE.</u>
				13'W-16'W ON END \$300.00 EACH	13'W-16'W ON SIDE \$400.00 EACH	
<b>16FT WIDE MAX ON END AND SIDE DOOR OPENINGS</b>						



2' Under Ground

