

FREE STANDING LEAN TO 12'- 15'W

STATES: AR, OK, MO, NE, IL, IN, IA, KS NON CERTIFIED



12x20	12x25	12x30	12x35	12x40
\$2,450	\$2,950	\$3,450	\$3,950	\$4,450
13x20	13x25	13x30	13x35	13x40
\$2,650	\$3,150	\$3,650	\$4,150	\$4,650
14x20	14x25	14x30	14x35	14x40
\$2,850	\$3,350	\$3,850	\$4,350	\$4,850
15x20	15x25	15x30	15x35	15x40
\$3,050	\$3,550	\$4,050	\$4,550	\$5,050

NOTE: BASE RAIL FRAME LENGTH'S ARE 20',25',30' ETC.

VERTICAL ROOF HAS NO OVERHANG ON FRONT OR BACK JUST ON SIDE EAVES.



WXL **Vertical Roof Style**

12x20	12x25	12x30	12x35	12x40
\$1,900	\$2,300	\$2,700	\$3,100	\$3,500
13x20	13x25	13x30	13x35	13x40
\$2,100	\$2,500	\$2,900	\$3,300	\$3,700
14x20	14x25	14x30	14x35	14x40
\$2,300	\$2,800	\$3,300	\$3,800	\$4,300
15x20	15x25	15x30	15x35	15x40
\$2,500	\$3,000	\$3,500	\$4,000	\$4,500

NOTE: BASE RAIL FRAME LENGTH'S ARE 20',25',30' ETC.

BOXED EAVE HAS 6" ROOF OVERHANG ON FRONT, BACK AND SIDE EAVES.



WXL **Boxed Eave Style**

12x20	12x25	12x30	12x35	12x40
\$1,700	\$2,025	\$2,350	\$2,675	\$3,000
13x20	13x25	13x30	13x35	13x40
\$1,900	\$2,225	\$2,550	\$2,875	\$3,200
14x20	14x25	14x30	14x35	14x40
\$2,100	\$2,525	\$2,950	\$3,375	\$3,800
15x20	15x25	15x30	15x35	15x40
\$2,300	\$2,725	\$3,150	\$3,575	\$4,000

NOTE: BASE RAIL FRAME LENGTH'S ARE 20',25',30' ETC.

REGULAR STYLE HAS 6" ROOF OVERHANG ON FRONT AND BACK.



WXL **Regular Style**

STANDARD FEATURES:

14 Gauge frame, 6ft Std legs, 29 Gauge roofing, maximum rafter/ column spacing 5' on center or less, 12'w-13'w buildings. Maximum spacing 4' on center on less for 14'-15'w buildings. Braces on all top corner posts. Low side 13'-14' ft max height have double legs and base rail system.



Customer must supply lull lift for buildings 13'-16' tall leg height.

ROOF REFLECTIVE INSULATION ADD ON:

Add 2' to width and multiply by length. EX. 12' wide x 21' long (14x21= 294 sf x rate = \$ 735.00) R Value 14.7

\$2.50 SF 95% Reflectivity Helps reduce building condensation

REGULAR STYLE LEG HEIGHT

	20'L	25'L	30'L	35'L	40'L
9&12FT	\$445	\$550	\$660	\$764	\$873
10&13FT	\$823	\$993	\$1,158	\$1,328	\$1,492
11&14FT	\$948	\$1,053	\$1,303	\$1,482	\$1,640
12&15FT	\$1,073	\$1,265	\$1,448	\$1,635	\$1,808
*13&16FT	\$1,466	\$1,727	\$1,968	\$2,225	\$2,458

*DOUBLE LEG AND BASE RAIL SYSTEM HEIGHTS 13FT-16FT

BOX EAVE / VERTICAL STYLE LEG HEIGHT CHART

	20'L	25'L	30'L	35'L	40'L
9&11FT	\$390	\$493	\$598	\$700	\$805
10&12FT	\$823	\$608	\$721	\$828	\$940
11&13FT	\$878	\$1,055	\$1,219	\$1,392	\$1,560
12&14FT	\$1,003	\$1,188	\$1,365	\$1,546	\$1,708
*13&15FT	\$1,396	\$1,651	\$1,885	\$2,135	\$2,360
*14&16FT	\$1,536	\$1,804	\$2,051	\$2,315	\$2,538

*DOUBLE LEG AND BASE RAIL SYSTEM HEIGHTS 13FT-16FT

CLOSE ONE SIDE CHART

	20'L	25'L	30'L	35'L	40'L
8FT	\$405	\$485	\$570	\$660	\$755
9FT	\$470	\$555	\$645	\$740	\$840
10FT	\$535	\$625	\$720	\$820	\$925
11FT	\$600	\$695	\$795	\$900	\$1,010
12FT	\$665	\$765	\$870	\$980	\$1,095
13FT	\$730	\$835	\$945	\$1,060	\$1,180
14FT	\$795	\$905	\$1,020	\$1,140	\$1,265
15FT	\$860	\$975	\$1,095	\$1,220	\$1,350
16FT	\$925	\$1,045	\$1,170	\$1,300	\$1,435

ADD 60% FOR VERTICAL SIDES

REFLECTIVE INSULATION (BOTH SIDES) ADD ON:

Multiply leg height by length by 2.

EX. 21' long x 6' tall 6x21= 126 sf x 2 =252 sf x 2.50 = \$630.00 both sides

CLOSE ONE END CHART

	12'W	13'W	14'W	15'W
8FT	\$750	\$800	\$850	\$916
9FT	\$850	\$900	\$950	\$1,015
10FT	\$950	\$1,000	\$1,050	\$1,116
11FT	\$1,050	\$1,100	\$1,150	\$1,216
12FT	\$1,150	\$1,200	\$1,250	\$1,316
13FT	\$1,300	\$1,350	\$1,400	\$1,466
14FT	\$1,400	\$1,450	\$1,500	\$1,566

ADD 40% FOR VERTICAL ENDS

REFLECTIVE INSULATION (PER END) ADD ON:

Add 3' to leg height multiply by width

EX. 12' wide x 6' tall 9x12= 108 sf x 2.50 = \$270.00 per end

- Free Installation On Your Level Lot
- Engineer Plans Available Call 877-494-2997
- Financing Available / Rent To Own Available
- Rebar Anchors Included /Concrete Anchors Included

FREE STANDING LEAN 12'-15' WIDE OPTIONS

		20'L	25'L	30'L	35'L	40'L
12 GAUGE FRAME UPGRADE	12'W-15'W	\$600	\$650	\$700	\$750	\$800
	3FT BRACES	\$72	\$86	\$101	\$115	\$130
MOBILE HOME ANCHORS		\$120	\$120	\$180	\$180	\$240

Labor Fees	20'L	25'L	30'L	35'L	40'L
Build over fee	\$150	\$175	\$200	\$250	\$300
Cut leg fee	\$175	\$200	\$250	\$300	\$350

3' brace upgrade recommended for buildings 8' and higher. Extra support recommended for buildings 10'-12' Tall Legs to prevent swaying.

***30 Day Workmanship warranty** on all Buildings, effective day of Installation.
***20 Year limited warranty** on 12 Gauge framing materials assuming regular care and maintenance given to building.

We strongly recommend you to purchase vertical roofs on buildings 31ft or longer to prevent leaks.


Add \$100.00 Trip Fee on any purchase less than \$500.00

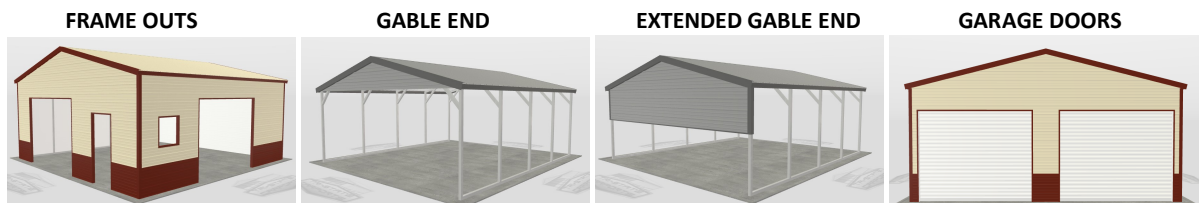
Connection fees valid only if you are purchasing 2 buildings at the same time (not on existing buildings)

Connecting end to end. \$100.00
 Connecting side to side. \$150.00

CONCRETE DIMENSIONS

In reference to frame size
Ex. 12'Wx20'L building frame size. Make pad 12'8"Wx20'8"L.
 Make the extra 4" all around slope away from the building edge to run off water.

EXTRA FRAME BOW	WELDED TRUSSES	EXTRA BRACES	GARAGE DOORS	*GABLE END
12'-15' WIDE \$252 EA.	4' LONG \$32.00 EA. 5' LONG \$50.00 EA. 8' LONG \$94.00 EA.	2' LONG \$14.00 EA. 3' LONG \$22.00 EA.	6'WX6'H \$704.00 EA. 8'WX7'H \$848.00 EA. 9'WX7'H \$920.00 EA.	12'-15' WIDE \$288.00 EA.
ADD \$10.00 FOR EACH ADDITIONAL HEIGHT.				*CARPORT PEAK ENCLOSED
MOBILE HOME ANCHORS	ASPHALT ANCHORS	WINDOWS white with grids	10'WX8'H \$992.00 EA. 10'WX10'H \$1,064.00 EA. 12'WX12'H \$2,304.00 EA.	**EXTENDED GABLE
3/4"X30" \$30.00 EA.	3/4"X30" \$30.00 EA.	24"X36" \$190.00 EA.		12'-15' WIDE \$504.00 EA.
WALK IN DOOR left outswing	EXTRA PANELS 36" wide			
36"X80" \$515.00 EA. ADD \$50.00 SIDE FEE (IF FRAME HEADER BAR IS NEEDED ADD \$100) <u>BUILDING MUST BE A MIN OF 7FT TALL TO INSTALL DOOR ON SIDE.</u>	21' LONG \$130.00 EA. 26' LONG \$158.00 EA. 31' LONG \$187.00 EA.	*36' LONG \$216.00 EA. *41' LONG \$259.00 EA. *NOT A CONTINUOUS PANEL.	ADD \$100.00 SIDE DOOR FEE (PER EACH DOOR) <u>BUILDING MUST BE 1' TALLER TO INSTALL DOOR ON SIDE.</u>	**GABLE PLUS 3' PANEL
EXTRA L TRIM	EXTRA J TRIM	45° TRIM KIT	ELECTRIC DOOR OPENER \$950.00 EACH	ADD 40% FOR VERTICAL GABLES
\$1.25 (PER FT)	\$1.12 (PER FT)	\$99.00 EA. MUST CLOSE END OR SIDE FIRST.	RECOMMENDED 10-12' TALL ON CONCRETE OR GROUND.	EXTRA SUPPORTS \$100.00 EACH



FRAME OUTS	WINDOW \$80.00 EACH	WALK DOOR \$90.00 EACH	DOOR FRAME OUTS	6'W-12'W ON END \$150.00 EACH 13'W-16'W ON END \$300.00 EACH	6'W-12'W ON SIDE \$200.00 EACH 13'W-16'W ON SIDE \$400.00 EACH	ON ENDS: MUST CLOSE FIRST FOR FRAME OUTS, IF NO PANELS WANTED ON END (FRAME END ONLY) <u>DISCOUNT 20% FROM CLOSED END PRICE.</u>
16FT WIDE MAX ON END AND SIDE DOOR OPENINGS						



Z Under Ground

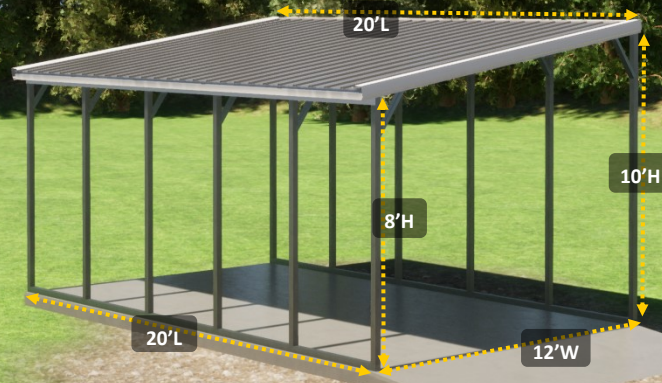
FREE STANDING LEANTO 12'-15'W

STATES: **CO, MI, SD, WI, WY**

NON CERTIFIED



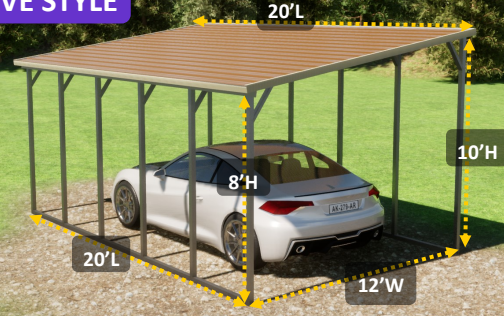
Vertical Roof Style



REGULAR STYLE



BOXED EAVE STYLE



14'-15' W 4' ON CENTER STD 8FT LEGS ON LOW SIDE & 11FT LEGS ON HIGH SIDE					14'-15' W 4' ON CENTER STD 8FT LEGS ON LOW SIDE & 10FT LEGS ON HIGH SIDE					14'-15' W 4' ON CENTER STD 8FT LEGS ON LOW SIDE & 10FT LEGS ON HIGH SIDE				
Regular Style					B. Eave Style (Horizontal Roof)					Vertical Roof Style				
12x21	12x26	12x31	12x36	12x41	12x21	12x26	12x31	12x36	12x41	12x20	12x25	12x30	12x35	12x40
\$2,432	\$3,024	\$3,463	\$3,696	\$4,315	\$2,521	\$3,114	\$3,552	\$3,786	\$4,406	\$2,886	\$3,354	\$3,575	\$3,835	\$4,355
13x21	13x26	13x31	13x36	13x41	13x21	13x26	13x31	13x36	13x41	13x20	13x25	13x30	13x35	13x40
\$2,620	\$3,211	\$3,650	\$3,883	\$4,502	\$2,708	\$3,301	\$3,739	\$3,973	\$4,593	\$3,089	\$3,557	\$4,181	\$4,805	\$5,429
14x21	14x26	14x31	14x36	14x41	14x21	14x26	14x31	14x36	14x41	14x20	14x25	14x30	14x35	14x40
\$2,807	\$3,398	\$3,838	\$4,070	\$4,689	\$2,895	\$3,488	\$3,926	\$4,160	\$4,780	\$3,292	\$3,760	\$4,384	\$5,008	\$5,632
15x21	15x26	15x31	15x36	15x41	15x21	15x26	15x31	15x36	15x41	15x20	15x25	15x30	15x35	15x40
\$2,994	\$3,585	\$4,025	\$4,258	\$4,876	\$3,082	\$3,675	\$4,113	\$4,347	\$4,967	\$3,494	\$3,962	\$4,586	\$5,210	\$5,834

REFLECTIVE INSULATION ADD ON ROOF ONLY: Add 2' to width and multiply by length.
EX. 12' wide x 21' long (14x21= 294 sf x rate = \$ 735.00)

R Value 14.7 **\$2.50 SF** 95% Reflectivity
Helps reduce building condensation

Standard Features Include:

14 Gauge frame, 29 Gauge roofing, maximum rafter/ column spacing 4' on center or less for 12'-w-15'-w buildings. Braces on all on top corner posts.
Low side 13'-14'ft max height have double legs and rail system.

- Free Installation On Your Level Lot
- Financing Available / Rent To Own Available
- Engineer Plans Available Call 877-494-2997
- Rebar Anchors Included /Concrete Anchors Included

• Note: Frame Lengths Are 20', 25', 30' Etc. Vertical Roofs Have No Overhang Front Or Back.

***30 Day Workmanship warranty** on all Buildings, effective day of Installation.
***20 Year limited warranty** on 12 Gauge framing materials assuming regular care and maintenance given to building.



2023 V2

3ft overhang available for all three styles.

20'LONG	25'LONG	30'LONG	35'LONG	40'LONG
\$400	\$500	\$675	\$850	\$1,050

We strongly recommend you to purchase vertical roofs on buildings 31ft or longer to prevent leaks.



**CUSTOMER MUST SUPPLY
LULL LIFT FOR INSTALLATION ON
BUILDINGS TALLER THAN 12 FT LEGS.**

"ALL PRICES SUBJECT TO CHANGE WITHOUT NOTICE"

©2023 Copyright All Rights Reserved Tri State Carports, Inc



REGULAR STYLE HEIGHT INCREASE						CLOSE ONE SIDE						CLOSE ONE END			
Height	21' L	26' L	31' L	36' L	41' L	Leg Height	21'	26' L	31' L	36' L	41' L	12' W	13' W	14' W	15' W
9&12 Ft	\$507	\$675	\$845	\$1,013	\$1,182	8 Ft Tall	\$558	\$679	\$799	\$920	\$1,039	\$866	\$1,016	\$1,166	\$1,266
10&13 Ft	\$750	\$938	\$1,125	\$1,313	\$1,500	9 Ft Tall	\$621	\$755	\$887	\$1,021	\$1,154	\$945	\$1,095	\$1,245	\$1,345
11&14 Ft	\$900	\$1,107	\$1,313	\$1,520	\$1,725	10 Ft Tall	\$684	\$837	\$989	\$1,141	\$1,293	\$1,022	\$1,172	\$1,322	\$1,422
12&15 Ft	\$1,050	\$1,275	\$1,500	\$1,725	\$1,950	11 Ft Tall	\$748	\$920	\$1,090	\$1,262	\$1,433	\$1,101	\$1,251	\$1,401	\$1,501
*13&16 Ft	\$1,332	\$1,557	\$1,782	\$2,007	\$2,232	12 Ft Tall	\$875	\$1,065	\$1,255	\$1,445	\$1,635	\$1,217	\$1,367	\$1,517	\$1,617
BOXED EAVE/VERTICAL HEIGHT INCREASE						13 Ft Tall	\$1,002	\$1,211	\$1,420	\$1,630	\$1,838	\$1,334	\$1,484	\$1,634	\$1,734
Height	21' L	26' L	31' L	36' L	41' L	14 Ft Tall	\$1,128	\$1,357	\$1,585	\$1,813	\$2,041	\$1,451	\$1,601	\$1,751	\$1,851
9&11 Ft	\$450	\$600	\$750	\$900	\$1,050	15 Ft Tall	\$1,255	\$1,503	\$1,749	\$1,997	\$2,244				
10&12 Ft	\$563	\$750	\$938	\$1,125	\$1,313	16 Ft Tall	\$1,382	\$1,648	\$1,914	\$2,180	\$2,447				
11&13 Ft	\$878	\$1,013	\$1,220	\$1,425	\$1,632	Add 60% For Vertical Sides						Add 40% For Vertical Ends			
12&14 Ft	\$957	\$1,182	\$1,407	\$1,632	\$1,857	INSULATION (BOTH SIDES) ADD ON: Multiply leg height by length by 2. EX. 21' long x 8' tall 8x21= 168 sf x 2.50 = \$420.00 per side						INSULATION (PER END) ADD ON: Add 3' to leg height multiply by width EX. 12' wide x 8' tall 11x12= 132 sf x 2.50 = \$330.00 per end			
*13&15 Ft	\$1,238	\$1,463	\$1,688	\$1,913	\$2,138										
*14&16 Ft	\$1,425	\$1,650	\$1,875	\$2,100	\$2,325										

* DOUBLE LEG AND BASE RAIL SYSTEM					
12G FRAME UPGRADE	3' BRACE UPGRADE	MOBILE HOME ANCHORS			
21' LONG	\$672	\$72	\$120		
26' LONG	\$720	\$86	\$120		
31' LONG	\$816	\$101	\$180		
36' LONG	\$864	\$115	\$180		
41' LONG	\$912	\$130	\$240		
Labor Fees	20' L	25' L	30' L	35' L	40' L
Build over fee	\$150	\$175	\$200	\$250	\$275
Cut legs on site	\$150	\$200	\$250	\$300	\$350



CONCRETE DIMENSIONS

In reference to frame size
 Ex. 12'Wx20'L building frame size.
 Make pad 12'8"Wx20'8"L.
 the extra 4" all around make it slope away from the building edge to run off water.

Add \$100.00 Trip Fee on any purchase less than \$500.00

Connection fees valid only if you are purchasing 2 buildings at the same time (not on existing buildings)

Connecting end to end. \$100.00
 Connecting side to side. \$150.00

EXTRA FRAME BOW	EXTRA BRACES	GARAGE DOORS	*GABLE END
12'-13' WIDE \$315 EA. 14'-15' WIDE \$360 EA. ADD \$10.00 FOR EACH ADDITIONAL HEIGHT.	2' LONG \$14.00 EA. 3' LONG \$22.00 EA.	6'WX6'H \$704.00 EA. 8'WX7'H \$848.00 EA. 9'WX7'H \$920.00 EA.	12'-13' WIDE \$360 EA. 14'-15' WIDE \$486 EA. *CARPORT PEAK ENCLOSED
MOBILE HOME ANCHORS	ASPHALT ANCHORS	WINDOWS white with grids	**EXTENDED GABLE
3/4"X30" \$30.00 EA.	3/4"X30" \$30.00 EA.	24"X36" \$190.00 EA.	12'-13' WIDE \$630 EA. 14'-15' WIDE \$675 EA.
WALK IN DOOR left outswing	EXTRA PANELS 36" wide		**GABLE PLUS 3' PANEL
36"X80" \$515.00 EA. ADD \$50.00 SIDE FEE (IF FRAME HEADER BAR IS NEEDED ADD \$100) <u>BUILDING MUST BE A MIN OF 7FT TALL TO INSTALL DOOR ON SIDE.</u>	21' LONG \$130.00 EA.	*36' LONG \$216.00 EA.	ADD 40% FOR VERTICAL GABLES
	26' LONG \$158.00 EA.	*41' LONG \$259.00 EA.	
	31' LONG \$187.00 EA.	*NOT A CONTINUOUS PANEL.	
EXTRA L TRIM	EXTRA J TRIM	45° TRIM KIT	RECOMMENDED 10-12' TALL ON CONCRETE OR GROUND.
\$1.25 (PER FT)	\$1.12 (PER FT)	\$99.00 EA. MUST CLOSE END OR SIDE FIRST.	\$400.00

FRAME OUTS	WINDOW	DOOR FRAME OUTS	16FT WIDE MAX ON END AND SIDE DOOR OPENINGS	ON ENDS: MUST CLOSE FIRST FOR FRAME OUTS, IF NO PANELS WANTED ON END (FRAME END ONLY) DISCOUNT 20% FROM CLOSED END PRICE.
	WINDOW <u>\$80.00 EACH</u>			
	WALK DOOR <u>\$90.00 EACH</u>			
		6'W-12'W ON END <u>\$150.00 EACH</u> 13'W-16'W ON END <u>\$300.00 EACH</u> 6'W-12'W ON SIDE <u>\$200.00 EACH</u> 13'W-16'W ON SIDE <u>\$400.00 EACH</u>		



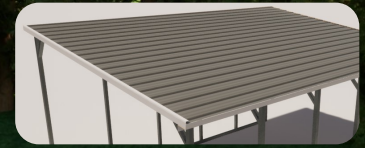
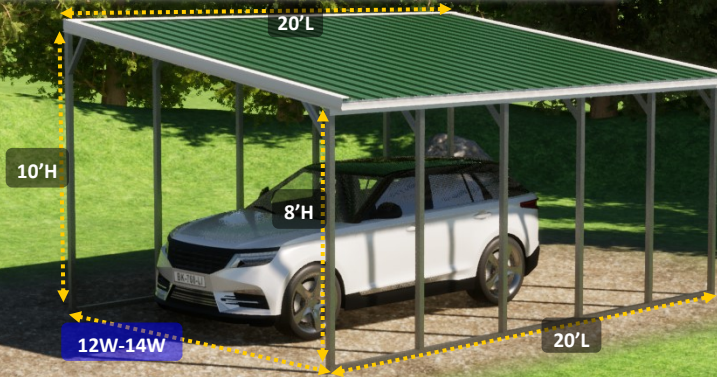
FREE STANDING LEANTO 12'-24'W

STATES: AR, CO, IA, IN, KS, MI, MO, NE, OK, WI

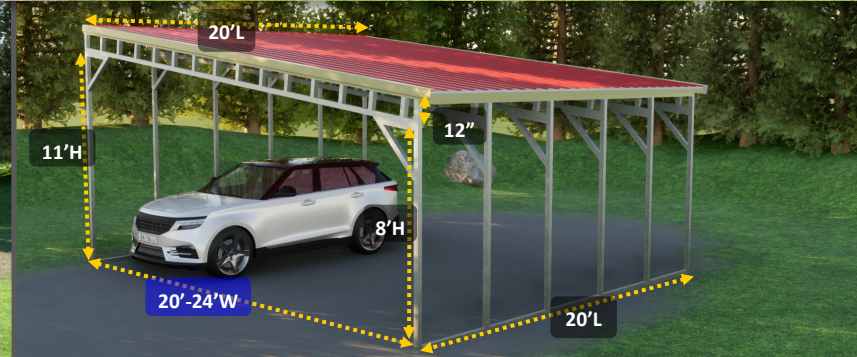
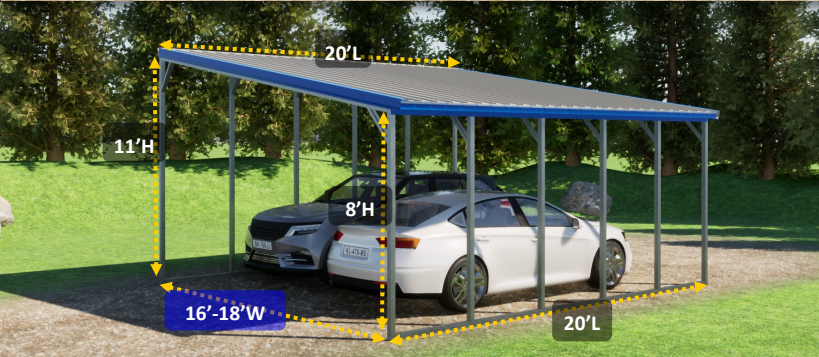
CERTIFIED 50PSF/115MPH



Vertical Roof



BOXED EAVE HORIZONTAL ROOF OPTION



12'-14' WIDE 10'&8'H					16'-18'W 11'&8'H					20'-24'W 11'&8'H				
B. Eave Style (Horizontal Roof)					B. Eave Style (Horizontal Roof)					B. Eave Style (Horizontal Roof)				
12x21	12x26	12x31	12x36	12x41	16x21	16x26	16x31	16x36	16x41	20x21	20x26	20x31	20x36	20x41
\$2,700	\$3,384	\$4,068	\$4,752	\$5,436	\$4,320	\$5,004	\$5,688	\$6,372	\$7,056	\$5,040	\$5,724	\$6,408	\$7,092	\$7,776
14x41	14x26	14x31	14x36	14x41	18x21	18x26	18x31	18x36	18x41	24x21	24x26	24x31	24x36	24x41
\$3,240	\$3,924	\$4,608	\$5,292	\$5,976	\$4,860	\$5,544	\$6,228	\$6,912	\$7,596	\$5,760	\$6,444	\$7,128	\$7,812	\$8,496
Vertical Roof Style					Vertical Roof Style					Vertical Roof Style				
12x20	12x25	12x30	12x35	12x40	16x20	16x25	16x30	16x35	16x40	20x20	20x25	20x30	20x35	20x40
\$3,420	\$4,104	\$4,788	\$5,472	\$6,156	\$5,040	\$5,724	\$6,408	\$7,092	\$7,776	\$5,940	\$6,624	\$7,308	\$7,992	\$8,676
14x20	14x25	14x30	14x35	14x40	18x20	18x25	18x30	18x35	18x40	24x20	24x25	24x30	24x35	24x40
\$3,780	\$4,464	\$5,148	\$5,832	\$6,516	\$5,400	\$6,084	\$6,768	\$7,452	\$8,136	\$6,300	\$6,984	\$7,668	\$8,352	\$9,036

INSULATION ADD ON ROOF ONLY: Add 2' to width and multiply by length.
EX. 12' wide x 21' long (14x21= 294 sf x rate = \$ 735)

R Value 14.7 **\$2.50 SF** 95% Reflectivity
Helps reduce building condensation

Standard Features Include:

14 Gauge frame, 29 Gauge roofing, maximum rafter/ column spacing 4' on center or less. Braces on all on top corner posts, single rafter on 12'-14'w buildings, double welded rafter on 16'-18'w buildings, ladder welded rafter on 20'-24'w buildings. High side 11'ft max leg height have single legs and rail system. High side 12'-16'ft max height have double legs and rail system.

(MUST ADD GROUND PACKAGE TO ALL SIZES IF BUILDING/S IS INSTALLED ON ANY SURFACE OTHER THAN CONCRETE)

- Free Installation On Your Level Lot
- Engineer Plans Available Call 877-494-2997
- Note: Frame Lengths Are 20',25',30' Etc. Vertical Roofs Have No Overhang Front Or Back.
- Financing Available / Rent To Own Available
- Rebar Anchors Included /Concrete Anchors Included

***30 Day Workmanship warranty** on all Buildings, effective day of Installation.
***20 Year limited warranty** on 12 Gauge framing materials assuming regular care and maintenance given to building.

We strongly recommend you to purchase vertical roofs on buildings 31ft or longer to prevent leaks.

- *20L-6 rafters 48" oc
- *25L-8 rafters 42.86" oc
- *30L-9 rafters 45" oc
- *35L-10 rafters 46.67" oc
- *40L-11 rafters 48" oc

2023 V2



CUSTOMER MUST SUPPLY
LULL LIFT FOR INSTALLATION ON
BUILDINGS TALLER THAN 12 FT LEGS.

"ALL PRICES SUBJECT TO CHANGE WITHOUT NOTICE"

©2023 Copyright All Rights Reserved Tri State Carports, Inc



12'-14' W BUILDING HEIGHT INCREASE						CLOSE ONE SIDE						CLOSE ONE END					
Height	21' L	26' L	31' L	36' L	41' L	Leg Height	21'	26' L	31' L	36' L	41' L	12'W	14' W	16' W	18' W	22' W	24' W
9&11 Ft	\$432	\$576	\$720	\$864	\$1,458	8 Ft Tall	\$429	\$522	\$615	\$708	\$800	\$1,259	\$1,473	\$1,658	\$1,872	\$2,058	\$2,219
*10&12 Ft	\$1,260	\$1,440	\$1,575	\$1,800	\$1,980	9 Ft Tall	\$478	\$581	\$683	\$786	\$888	\$1,356	\$1,590	\$1,794	\$2,028	\$2,234	\$2,448
*11&13 Ft	\$1,512	\$1,683	\$1,842	\$2,097	\$2,304	10 Ft Tall	\$527	\$644	\$761	\$878	\$995	\$1,454	\$1,716	\$1,950	\$2,214	\$2,448	\$2,676
*12&14 Ft	\$1,638	\$1,881	\$2,067	\$2,367	\$2,610	11 Ft Tall	\$576	\$708	\$839	\$971	\$1,102	\$1,551	\$1,844	\$2,106	\$2,399	\$2,663	\$2,904
*13&15 Ft	\$1,890	\$2,124	\$2,331	\$2,664	\$2,934	12 Ft Tall	\$673	\$819	\$966	\$1,112	\$1,258	\$1,697	\$1,989	\$2,253	\$2,546	\$2,808	\$3,183
*14&16 Ft	\$2,016	\$2,322	\$2,556	\$2,934	\$3,240	13 Ft Tall	\$771	\$932	\$1,092	\$1,254	\$1,414	\$1,844	\$2,136	\$2,399	\$2,691	\$2,955	\$3,462
16'-24' W BUILDING HEIGHT INCREASE						14 Ft Tall	\$868	\$1,044	\$1,219	\$1,395	\$1,570	\$1,989	\$2,282	\$2,546	\$2,838	\$3,101	\$3,651
Height	21' L	26' L	31' L	36' L	41' L	15 Ft Tall	\$966	\$1,156	\$1,346	\$1,536	\$1,726	\$2,136	\$2,429	\$2,691	\$2,984	\$3,248	\$3,842
*9&12 Ft	\$1,179	\$1,341	\$1,464	\$1,665	\$1,827	16 Ft Tall	\$1,063	\$1,268	\$1,473	\$1,677	\$1,882	\$2,282	\$2,574	\$2,838	\$3,131	\$3,393	\$4,031
*10&13 Ft	\$1,431	\$1,584	\$1,728	\$1,962	\$2,151	Add 60% For Vertical Sides						Add 40% For Vertical Ends					
*11&14 Ft	\$1,557	\$1,782	\$1,953	\$2,232	\$2,457	INSULATION (BOTH SIDES) ADD ON: Multiply leg height by length by 2. EX. 21' long x 8' tall 8x21= 168 sf x 2.50 = \$420.00 per side						INSULATION (PER END) ADD ON: Add 3' to leg height multiply by width EX. 12' wide x 8' tall 11x12= 132 sf x 2.50 = \$330.00 per end					
*12&15 Ft	\$1,719	\$1,980	\$2,178	\$2,502	\$2,763												
*13&16 Ft	\$1,971	\$2,223	\$2,445	\$2,799	\$3,087												

* DOUBLE LEG AND BASE RAIL SYSTEM			
12G FRAME UPGRADE	3' BRACE UPGRADE	GROUND PACKAGE	
21' LONG	\$672	\$72	\$300
26' LONG	\$720	\$86	\$350
31' LONG	\$816	\$101	\$400
36' LONG	\$864	\$115	\$450
41' LONG	\$912	\$130	\$500

GROUND PACKAGE CONSISTS OF ADDING MOBILE HOME ANCHORS OR ASPHALT ANCHORS ON EVERY LEG TO MEET WIND LOAD OF 115 MPH

Labor Fees	20' L	25' L	30' L	35' L	40' L
Build over fee	\$200	\$250	\$300	\$350	\$400
Cut legs on site	\$150	\$200	\$250	\$300	\$350



CONCRETE DIMENSIONS

In reference to frame size
Ex. 12'Wx20'L building frame size.
Make pad 12'8"Wx20'8"L.
the extra 4" all around make it slope away from the building edge to run off water.

Add \$100.00 Trip Fee on any purchase less than \$500.00

Connection fees valid only if you are purchasing 2 buildings at the same time (not on existing buildings)

Connecting end to end. \$100.00
Connecting side to side. \$150.00

EXTRA FRAME BOW	EXTRA BRACES	GARAGE DOORS	*GABLE END
12'-14' WIDE \$315 EA. 16'-18' WIDE \$360 EA. 20'-24' WIDE \$630 EA. ADD \$10.00 FOR EACH ADDITIONAL HEIGHT.	2' LONG \$14.00 EA. 3' LONG \$22.00 EA.	6'WX6'H \$704.00 EA. 8'WX7'H \$848.00 EA. 9'WX7'H \$920.00 EA. 10'WX8'H \$992.00 EA. 10'WX10'H \$1,064.00 EA. 12'WX12'H \$2,304.00 EA.	12'-14' WIDE \$288 EA. 16'-18' WIDE \$389 EA. 20'-24' WIDE \$432 EA. *CARPORT PEAK ENCLOSED
MOBILE HOME ANCHORS	ASPHALT ANCHORS	WINDOWS white with grids	**EXTENDED GABLE
3/4"X30" \$30.00 EA.	3/4"X30" \$30.00 EA.	24"X36" \$190.00 EA.	12'-14' WIDE \$504 EA. 16'-18' WIDE \$540 EA. 20'-24' WIDE \$792 EA.
WALK IN DOOR left outswing	EXTRA PANELS 36" wide		**GABLE PLUS 3' PANEL
36"X80" \$515.00 EA. ADD \$50.00 SIDE FEE (IF FRAME HEADER BAR IS NEEDED ADD \$100)	21' LONG \$130.00 EA.	*36" LONG \$216.00 EA.	ADD 40% FOR VERTICAL GABLES
<u>BUILDING MUST BE A MIN OF 7FT TALL TO INSTALL DOOR ON SIDE.</u>	26' LONG \$158.00 EA.	*41' LONG \$259.00 EA.	
	31' LONG \$187.00 EA.	*NOT A CONTINUOUS PANEL.	
EXTRA L TRIM	EXTRA J TRIM	45° TRIM KIT	RECOMMENDED 10-12' TALL ON CONCRETE OR GROUND.
\$1.25 (PER FT)	\$1.12 (PER FT)	\$99.00 EA. MUST CLOSE END OR SIDE FIRST.	\$400.00

FRAME OUTS	WINDOW	DOOR FRAME OUTS	16FT WIDE MAX ON END AND SIDE DOOR OPENINGS	ON ENDS: MUST CLOSE FIRST FOR FRAME OUTS, IF NO PANELS WANTED ON END (FRAME END ONLY) DISCOUNT 20% FROM CLOSED END PRICE.
	WINDOW \$80.00 EACH			
	WALK DOOR \$90.00 EACH			
		6'W-12'W ON END \$150.00 EACH 13'W-16'W ON END \$300.00 EACH		
		6'W-12'W ON SIDE \$200.00 EACH 13'W-16'W ON SIDE \$400.00 EACH		

